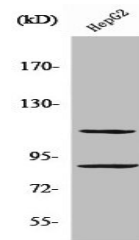


Product Datasheet

ZNF148 antibody (orb671835)

Description	ZNF148 antibody
Species/Host	Rabbit
Reactivity	Human, Mouse, Rat
Conjugation	Unconjugated
Tested Applications	ELISA, IF, IHC, WB
Immunogen	Synthesized peptide derived from the N-terminal region of Human ZBP-89.
Target	ZNF148
Preservatives	Liquid in PBS containing 50% glycerol, 0.5% rAlbumin and 0.02% sodium azide.
Form/Appearance	Liquid
Storage	Upon receipt, store at -20°C or -80°C. Avoid repeated freeze.
Note	For research use only
Isotype	IgG
Clonality	Polyclonal
Uniprot ID	Q9UQR1
Dilution Range	WB: 1:500-1:2000, IHC-P: 1:100-1:300, IF: 1:200-1:1000, ELISA: 1:5000
Expiration Date	12 months from date of receipt.



Western blot analysis of HepG2 cells using ZNF148 antibody.