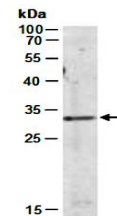


Product Datasheet

CASP14 antibody (orb67171)

Description	Rabbit polyclonal to CASP14.Caspase-14 (CASP14) belongs to the peptidase C14A family and is believed...
Species/Host	Rabbit
Reactivity	Human
Conjugation	Unconjugated
Tested Applications	WB
Immunogen	N-terminal region of human CASP14
Preservatives	0.01% NaN3
Storage	-20°C
Note	For research use only
Clonality	Polyclonal
Purity	Affinity purification
MW	28
Uniprot ID	P31944
Dilution Range	WB:1:1000-1:3000
Expiration Date	12 months from date of receipt.



Western blot analysis of total cell extr...