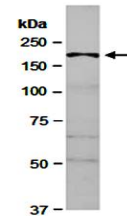


Product Datasheet

CUL7 antibody (orb67161)

Description	Rabbit polyclonal to CUL7. Cullin-7 (CUL7) is a component of an E3 ubiquitin-protein ligase complex, ...
Species/Host	Rabbit
Reactivity	Human
Conjugation	Unconjugated
Tested Applications	WB
Immunogen	C-terminal region of human CUL7
Preservatives	0.01% NaN ₃
Storage	-20°C
Note	For research use only
Clonality	Polyclonal
Purity	Affinity purification
MW	191
Uniprot ID	Q14999
Dilution Range	WB:1:1000-1:5000
Expiration Date	12 months from date of receipt.



Western blot analysis of total cell extr...