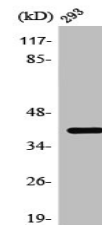


Product Datasheet

PPM1K antibody (orb671475)

Description	PPM1K antibody
Species/Host	Rabbit
Reactivity	Human
Conjugation	Unconjugated
Tested Applications	ELISA, IHC, WB
Immunogen	Synthesized peptide derived from the Internal region of Human PP2Ck.
Target	PPM1K
Preservatives	Liquid in PBS containing 50% glycerol, 0.5% rAlbumin and 0.02% sodium azide.
Form/Appearance	Liquid
Storage	Maintain refrigerated at 2-8°C for up to 2 weeks. For long term storage store at -20°C in small aliquots to prevent freeze-thaw cycles.
Note	For research use only
Isotype	IgG
Clonality	Polyclonal
Uniprot ID	Q8N3J5
Dilution Range	WB: 1:500-1:2000, IHC-P: 1:100-1:300, ELISA: 1:40000
Expiration Date	12 months from date of receipt.



Western blot analysis of 293 cells using...