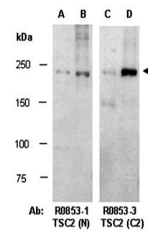


Product Datasheet

TSC2 antibody (orb67142)

Description	Rabbit polyclonal to TSC2. Tuberin (TSC2) forms a complex with TSC1 and inhibits the nutrient-mediate...
Species/Host	Rabbit
Reactivity	Human, Mouse
Conjugation	Unconjugated
Tested Applications	WB
Immunogen	N-terminal region of human TSC2
Preservatives	0.01% NaN ₃
Storage	-20°C
Note	For research use only
Clonality	Polyclonal
Purity	Affinity purification
MW	201
Uniprot ID	P49815
Dilution Range	WB:1:500-1:1000
Expiration Date	12 months from date of receipt.



Western blot analysis of total cell extr...