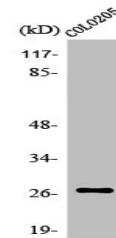


Product Datasheet

OR5D3 antibody (orb671368)

Description	OR5D3 antibody
Species/Host	Rabbit
Reactivity	Human
Conjugation	Unconjugated
Tested Applications	ELISA, IF, WB
Immunogen	Synthesized peptide derived from the Internal region of Human Olfactory receptor 5D3.
Target	OR5D3
Preservatives	Liquid in PBS containing 50% glycerol, 0.5% rAlbumin and 0.02% sodium azide.
Form/Appearance	Liquid
Storage	Maintain refrigerated at 2-8°C for up to 2 weeks. For long term storage store at -20°C in small aliquots to prevent freeze-thaw cycles.
Note	For research use only
Isotype	IgG
Clonality	Polyclonal
Uniprot ID	O95220 , Q6IFD1 , Q6KH09
Dilution Range	WB: 1:500-1:2000, IF: 1:200-1:1000, ELISA: 1:10000
Expiration Date	12 months from date of receipt.



Western blot analysis of MCF7 cells using...