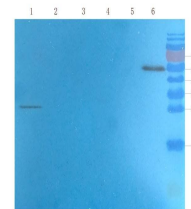


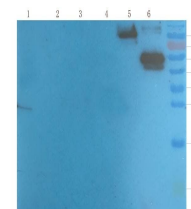
Product Datasheet

PGP9.5 antibody (orb6713)

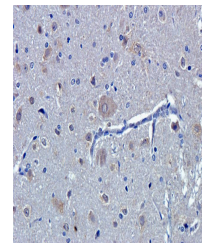
Description	PGP9.5 antibody
Species/Host	Rabbit
Reactivity	Human, Mouse, Rat
Conjugation	Unconjugated
Tested Applications	ELISA, ICC, IF, IHC-P, WB
Immunogen	KLH conjugated synthetic peptide derived from human PGP9.5. Please contact us for the exact immunogen sequence. The peptide is available as orb12924.
Target	PGP9.5
Form/Appearance	10 mM PBS, 0.02% sodium azide
Concentration	- 100 µg (in 200 µl): 0.5 mg/ml- 200 µg (in 400 µl): 0.5 mg/ml
Storage	Store at 4°C for up to two weeks. For long term storage, aliquot and store at -20°C, avoid freeze/thaw cycles.
Note	For research use only
Isotype	IgG
Clonality	Polyclonal
Purity	Polyclonal antibodies are purified by peptide affinity chromatography
MW	25 kDa
Uniprot ID	P09936 , Q00981 , Q9R0P9
Entrez	7345
Dilution Range	IF/ICC: 1:100-500, IHC-P: 1:100-500, WB: 1:200-1000
Expiration Date	12 months from date of receipt.



WB analysis of mouse brain (lane 1), rat...



Western blot analysis of mouse brain (la...



Immunohistochemical staining of paraffin...