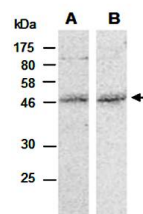


Product Datasheet

MMS21 antibody (orb67032)

Description	Rabbit polyclonal to MMS21.MMS21 is also known as E3 SUMO-protein ligase NSE2E3, which is a SUMO-pro...
Species/Host	Rabbit
Reactivity	Human
Conjugation	Unconjugated
Tested Applications	WB
Immunogen	C-terminal region of human MMS21
Preservatives	0.01% NaN ₃
Storage	-20°C
Note	For research use only
Clonality	Polyclonal
Purity	Affinity purification
MW	28
Uniprot ID	Q96MF7
Dilution Range	WB:1:1000-1:5000
Expiration Date	12 months from date of receipt.



Western blot analysis of total cell extr...