
Product Datasheet

GABA A Receptor gamma 2/GABRG2 Antibody (orb670298)

Description

GABA A Receptor gamma 2/GABRG2 Antibody

Species/Host

Rabbit

Reactivity

Human, Mouse, Rat

Conjugation

Unconjugated

Tested Applications

ELISA, FC, IHC, WB

Immunogen

E.coli-derived human GABA A Receptor gamma 2/GABRG2 recombinant protein (Position: Q40-R446).

Form/Appearance

Lyophilized

Concentration

Adding 0.2 ml of distilled water will yield a concentration of 500 µg/ml.

Storage

Store at -20°C for one year from date of receipt. After reconstitution, at 4°C for one month. It can also be aliquotted and stored frozen at -20°C for six months. Avoid repeated freeze-thaw cycles.

Note

For research use only

Application notes

Tested Species: In-house tested species with positive results. Other applications have not been tested. Optimal dilutions should be determined by end users. Add 0.2ml of distilled water will yield a concentration of 500ug/ml.

Isotype

Rabbit IgG

Clonality

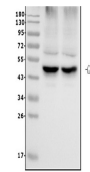
Polyclonal

MW

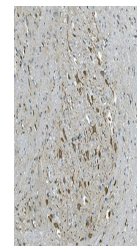
50 kDa

Uniprot ID
P18507
Expiration Date

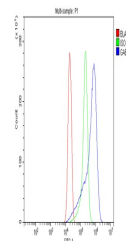
12 months from date of receipt.



Western blot analysis of GABA A Receptor...



IHC analysis of GABA A Receptor gamma 2/...



Flow Cytometry analysis of THP-1 cells u...