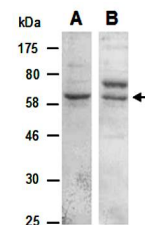


## Product Datasheet

### KLRG1 antibody pair (orb67026)

|                            |  |
|----------------------------|--|
| <b>Description</b>         | Rabbit polyclonal to KLRG1. 50 &mu;l KLRG1 (Middle) & 50 &mu;l KLRG1 (C-term) .vPair antibodies repre... |
| <b>Species/Host</b>        | Rabbit   |
| <b>Reactivity</b>          | Human, Mouse   |
| <b>Conjugation</b>         | Unconjugated   |
| <b>Tested Applications</b> | WB   |
| <b>Immunogen</b>           | -  |
| <b>Preservatives</b>       | 0.01% NaN3   |
| <b>Storage</b>             | -20°C  |
| <b>Note</b>                | For research use only  |
| <b>Clonality</b>           | Polyclonal   |
| <b>Purity</b>              | Affinity purification  |
| <b>MW</b>                  | 21   |
| <b>Uniprot ID</b>          | <b>088713</b>  |
| <b>Expiration Date</b>     | 12 months from date of receipt.  |



Western blot analysis of total cell extr...