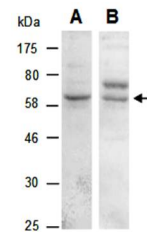


Product Datasheet

KLRG1 antibody (orb67025)

Description	Rabbit polyclonal to KLRG1. Killer cell lectin-like receptor subfamily G member 1 (KLRG1) is a single...
Species/Host	Rabbit
Reactivity	Human, Mouse
Conjugation	Unconjugated
Tested Applications	WB
Immunogen	C-terminal region of mouse KLRG1
Preservatives	0.01% NaN ₃
Storage	-20°C
Note	For research use only
Clonality	Polyclonal
Purity	Affinity purification
MW	21
Uniprot ID	088713
Dilution Range	WB:1:1000-1:5000
Expiration Date	12 months from date of receipt.



Western blot analysis of total cell extr...