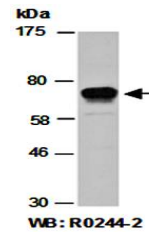


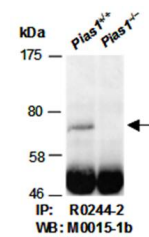
## Product Datasheet

### PIAS1 antibody (orb67014)

<b>Description</b>	Rabbit polyclonal to PIAS1.E3 SUMO-protein ligase PIAS1 is a member of the mammalian PIAS (protein i...
<b>Species/Host</b>	Rabbit
<b>Reactivity</b>	Human, Mouse
<b>Conjugation</b>	Unconjugated
<b>Tested Applications</b>	IF, IHC, IP, WB
<b>Immunogen</b>	C-terminal region of human PIAS1
<b>Preservatives</b>	0.01% NaN3
<b>Storage</b>	-20°C
<b>Note</b>	For research use only
<b>Clonality</b>	Polyclonal
<b>Purity</b>	antiserum
<b>MW</b>	72
<b>Uniprot ID</b>	<b>Q88907</b>
<b>Dilution Range</b>	WB:1:1000-1:5000,IP:1:50-1:100,IF:1:100-1:200,IHC:1:100-1:200
<b>Expiration Date</b>	12 months from date of receipt.



Western blot analysis of total cell extr...



Western blot analysis of total cell extr...