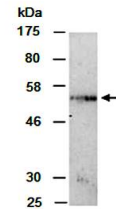


Product Datasheet

CXCR2 antibody (orb67006)

Description	Rabbit polyclonal to CXCR2.C-X-C chemokine receptor type 2 (CXCR2) is a multi-pass membrane protein,...
Species/Host	Rabbit
Reactivity	Human
Conjugation	Unconjugated
Tested Applications	WB
Immunogen	N-terminal region of human CXCR2
Preservatives	0.01% NaN3
Storage	-20°C
Note	For research use only
Clonality	Polyclonal
Purity	Affinity purification
MW	41
Uniprot ID	P25025
Dilution Range	WB:1:1000-1:5000
Expiration Date	12 months from date of receipt.



Western blot analysis of total cell extr...