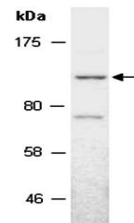


Product Datasheet

KDM7 antibody (orb67003)

Description	Rabbit polyclonal to KDM7. Lysine-specific histone demethylase 7 (KDM7) is a histone demethylase requ...
Species/Host	Rabbit
Reactivity	Human
Conjugation	Unconjugated
Tested Applications	WB
Immunogen	C-terminal region of human KDM7
Preservatives	0.01% NaN ₃
Storage	-20°C
Note	For research use only
Clonality	Polyclonal
Purity	Affinity purification
MW	107
Uniprot ID	Q6ZMT4
Dilution Range	WB:1:500-1:1000
Expiration Date	12 months from date of receipt.



Western blot analysis of total cell extr...