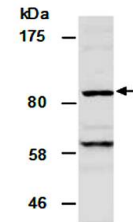


## Product Datasheet

### KDM7 antibody (orb67002)

<b>Description</b>	Rabbit polyclonal to KDM7. Lysine-specific histone demethylase 7 (KDM7) is a histone demethylase requ...
<b>Species/Host</b>	Rabbit
<b>Reactivity</b>	Human
<b>Conjugation</b>	Unconjugated
<b>Tested Applications</b>	IP, WB
<b>Immunogen</b>	middle region of human KDM7
<b>Preservatives</b>	0.01% NaN <sub>3</sub>
<b>Storage</b>	-20°C
<b>Note</b>	For research use only
<b>Clonality</b>	Polyclonal
<b>Purity</b>	Affinity purification
<b>MW</b>	107
<b>Uniprot ID</b>	<a href="#">Q6ZMT4</a>
<b>Dilution Range</b>	WB:1:1000-1:5000
<b>Expiration Date</b>	12 months from date of receipt.



Western blot analysis of total cell extr...