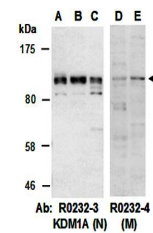


Product Datasheet

KDM1A antibody (orb66998)

Description	Rabbit polyclonal to KDM1A. Lysine-specific histone demethylase 1A (KDM1A) is a histone demethylase t...
Species/Host	Rabbit
Reactivity	Human, Mouse
Conjugation	Unconjugated
Tested Applications	WB
Immunogen	middle region of human KDM1A
Preservatives	0.01% NaN ₃
Storage	-20°C
Note	For research use only
Clonality	Polyclonal
Purity	Affinity purification
MW	93
Uniprot ID	O60341
Dilution Range	WB:1:1000-1:5000
Expiration Date	12 months from date of receipt.



Western blot analysis of total cell extr...