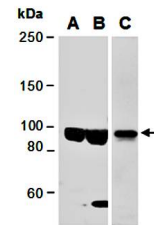


Product Datasheet

KDM1B antibody (orb66973)

Description	Rabbit polyclonal to KDM1B. Lysine-specific histone demethylase 1B (KDM1B) belongs to the flavin mono...
Species/Host	Rabbit
Reactivity	Human
Conjugation	Unconjugated
Tested Applications	ChIP, IP, WB
Immunogen	N-terminal region of human KDM1B
Preservatives	0.01% NaN ₃
Storage	-20°C
Note	For research use only
Clonality	Polyclonal
Purity	Affinity purification
MW	92
Uniprot ID	Q8NB78
Dilution Range	WB:1:1000-1:5000
Expiration Date	12 months from date of receipt.



Western blot analysis of total cell extr...