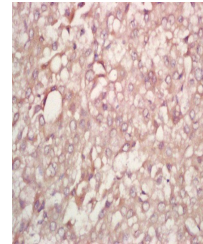


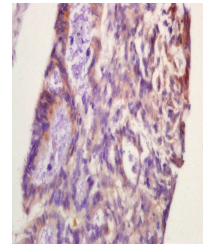
Product Datasheet

PFK2 (phospho-Ser467) antibody (orb6697)

Description	PFK2 (phospho-Ser467) antibody
Species/Host	Rabbit
Reactivity	Human, Mouse, Rat
Conjugation	Unconjugated
Tested Applications	IHC-P, WB
Immunogen	KLH conjugated synthesised phosphopeptide derived from human PFK2 around the phosphorylation site of Ser467 (LA(p-S)PE)
Target	Phospho-PFKFB3/PFK2 (Ser467)
Preservatives	0.01M TBS(pH7.4) with 1% rAlbumin, 0.03% Proclin300 and 50% Glycerol.
Form/Appearance	Liquid
Concentration	1mg/ml
Storage	Shipped at 4°C. Store at -20 °C for one year. Avoid repeated freeze/thaw cycles.
Note	For research use only
Isotype	IgG
Clonality	Polyclonal
MW	60 kDa
Uniprot ID	Q16875
Dilution Range	WB=1:500-2000, IHC-P=1:100-500
Expiration Date	12 months from date of receipt.



Immunohistochemical staining of human li...



Immunohistochemical analysis of formalin...