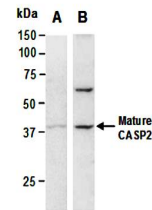


Product Datasheet

CASP2 antibody (orb66966)

Description	Rabbit polyclonal to CASP2. CASP2 is a member of the cysteine-aspartic acid protease (caspase) family...
Species/Host	Rabbit
Reactivity	Human, Mouse
Conjugation	Unconjugated
Tested Applications	WB
Immunogen	N-terminal region of human CASP2
Preservatives	0.01% NaN ₃
Storage	-20°C
Note	For research use only
Clonality	Polyclonal
Purity	Affinity purification
MW	51
Uniprot ID	P42575
Dilution Range	WB:1:1000-1:5000
Expiration Date	12 months from date of receipt.



Western blot analysis of total cell extr...