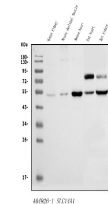


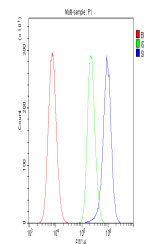
## Product Datasheet

### SLC14A1/UTE Antibody (orb669246)

<b>Description</b>	SLC14A1/UTE Antibody
<b>Species/Host</b>	Rabbit
<b>Reactivity</b>	Human, Mouse, Rat
<b>Conjugation</b>	Unconjugated
<b>Tested Applications</b>	FC, WB
<b>Immunogen</b>	A synthetic peptide corresponding to a sequence of mouse SLC14A1/UTE (DMKEFANWLKDKPVVLQFMD).
<b>Target</b>	Slc14a1
<b>Form/Appearance</b>	Lyophilized: Each vial contains 4mg Trehalose, 0.9mg NaCl, 0.2mg Na <sub>2</sub> HPO <sub>4</sub> , 0.01mg NaN <sub>3</sub> .
<b>Concentration</b>	Adding 0.2 ml of distilled water will yield a concentration of 500 µg/ml.
<b>Storage</b>	Store at -20°C for one year from date of receipt. After reconstitution, at 4°C for one month. It can also be aliquotted and stored frozen at -20°C for six months. Avoid repeated freeze-thaw cycles.
<b>Note</b>	For research use only
<b>Application notes</b>	Tested Species: In-house tested species with positive results. Other applications have not been tested. Optimal dilutions should be determined by end users. Add 0.2ml of distilled water will yield a concentration of 500ug/ml.
<b>Isotype</b>	Rabbit IgG
<b>Clonality</b>	Polyclonal
<b>MW</b>	42.126kDa
<b>Uniprot ID</b>	<a href="#">Q8VHLO</a>
<b>Expiration Date</b>	12 months from date of receipt.



WB analysis of Lane 1: mouse kidney tiss...



Flow Cytometry analysis of HEPA1-6 cells...