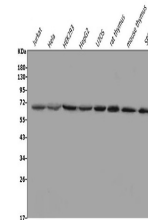


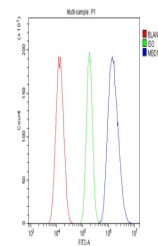
Product Datasheet

MBD1 Antibody (orb669188)

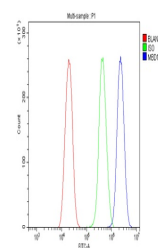
Description	MBD1 Antibody
Species/Host	Rabbit
Reactivity	Human, Mouse, Rat
Conjugation	Unconjugated
Tested Applications	FC, WB
Immunogen	A synthetic peptide corresponding to a sequence of human MBD1 (DLTLDFKQGILCYPAPKAHPVAVASKRK).
Form/Appearance	Lyophilized
Concentration	Adding 0.2 ml of distilled water will yield a concentration of 500 µg/ml.
Storage	Store at -20°C for one year from date of receipt. After reconstitution, at 4°C for one month. It can also be aliquotted and stored frozen at -20°C for six months. Avoid repeated freeze-thaw cycles.
Note	For research use only
Application notes	Tested Species: In-house tested species with positive results. Other applications have not been tested. Optimal dilutions should be determined by end users. Add 0.2ml of distilled water will yield a concentration of 500ug/ml.
Isotype	Rabbit IgG
Clonality	Polyclonal
MW	67 kDa
Uniprot ID	Q9UIS9
Expiration Date	12 months from date of receipt.



Western blot analysis of MBD1 using anti...



Flow Cytometry analysis of A549 cells us...



Flow Cytometry analysis of U2OS cells us...