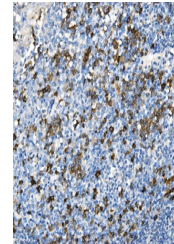


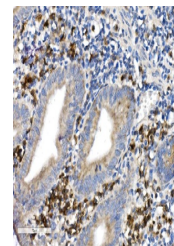
## Product Datasheet

### CD38 Antibody (orb669163)

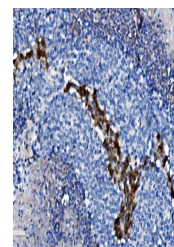
|                            |                                                                                                                                                                                                                                   |
|----------------------------|-----------------------------------------------------------------------------------------------------------------------------------------------------------------------------------------------------------------------------------|
| <b>Description</b>         | CD38 Antibody                                                                                                                                                                                                                     |
| <b>Species/Host</b>        | Rabbit                                                                                                                                                                                                                            |
| <b>Reactivity</b>          | Human                                                                                                                                                                                                                             |
| <b>Conjugation</b>         | Unconjugated                                                                                                                                                                                                                      |
| <b>Tested Applications</b> | FC, ICC, IF, IHC, WB                                                                                                                                                                                                              |
| <b>Immunogen</b>           | A synthetic peptide corresponding to a sequence of human CD38 (EVHNLQPEKVQTLEAWVIHGGREDSRDLQD).                                                                                                                                   |
| <b>Form/Appearance</b>     | Lyophilized                                                                                                                                                                                                                       |
| <b>Concentration</b>       | Adding 0.2 ml of distilled water will yield a concentration of 500 µg/ml.                                                                                                                                                         |
| <b>Storage</b>             | Store at -20°C for one year from date of receipt. After reconstitution, at 4°C for one month. It can also be aliquotted and stored frozen at -20°C for six months. Avoid repeated freeze-thaw cycles.                             |
| <b>Note</b>                | For research use only                                                                                                                                                                                                             |
| <b>Application notes</b>   | Tested Species: In-house tested species with positive results. Other applications have not been tested. Optimal dilutions should be determined by end users. Add 0.2ml of distilled water will yield a concentration of 500ug/ml. |
| <b>Isotype</b>             | Rabbit IgG                                                                                                                                                                                                                        |
| <b>Clonality</b>           | Polyclonal                                                                                                                                                                                                                        |
| <b>MW</b>                  | 45 kDa                                                                                                                                                                                                                            |
| <b>Uniprot ID</b>          | <b>P28907</b>                                                                                                                                                                                                                     |
| <b>Expiration Date</b>     | 12 months from date of receipt.                                                                                                                                                                                                   |



IHC analysis of CD38 using anti-CD38 ant...



IHC analysis of CD38 using anti-CD38 ant...



IHC analysis of CD38 using anti-CD38 ant...