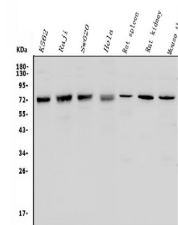


Product Datasheet

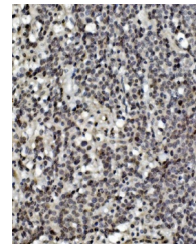
MCPIP1/ZC3H12A Antibody (orb669149)

Description	MCPIP1/ZC3H12A Antibody
Species/Host	Rabbit
Reactivity	Human, Mouse, Rat
Conjugation	Unconjugated
Tested Applications	ELISA, FC, ICC, IF, IHC, WB
Immunogen	E.coli-derived human MCPIP1/ZC3H12A recombinant protein (Position: Q36-T98).
Form/Appearance	Lyophilized
Concentration	Adding 0.2 ml of distilled water will yield a concentration of 500 µg/ml.
Storage	Store at -20°C for one year from date of receipt. After reconstitution, at 4°C for one month. It can also be aliquotted and stored frozen at -20°C for six months. Avoid repeated freeze-thaw cycles.
Note	For research use only
Application notes	Tested Species: In-house tested species with positive results. Other applications have not been tested. Optimal dilutions should be determined by end users.
Isotype	Rabbit IgG
Clonality	Polyclonal
MW	73 kDa
Uniprot ID	Q5D1E8
Dilution Range	WB: 0.25-0.5µg/ml, IHC-P: 5-10µg/ml, IF: 5µg/ml, FC: 1-3µgg/1x106 cells, ELISA: 0.1-0.5µg/ml
Expiration Date	12 months from date of receipt.

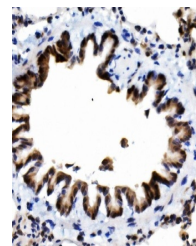


Western blot analysis of MCPIP1/ZC3H12A

...



IHC analysis of MCPIP1/ZC3H12A using ant...



IHC analysis of MCPIP1/ZC3H12A using ant...