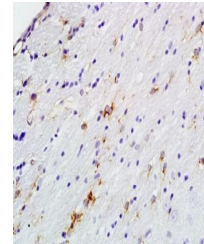


Product Datasheet

PEA15 (phospho-Ser104) antibody (orb6688)

Description	PEA15 (phospho-Ser104) antibody
Species/Host	Rabbit
Conjugation	Unconjugated
Tested Applications	ELISA, IF, IHC-Fr, IHC-P
Immunogen	KLH conjugated Synthesised phosphopeptide derived from human PEA15 around the phosphorylation site of Ser104 (IP(p-S)AK)
Target	Phospho-PEA15 (Ser104)
Preservatives	0.01M TBS(pH7.4) with 1% rAlbumin, 0.03% Proclin300 and 50% Glycerol.
Form/Appearance	Liquid
Concentration	1mg/ml
Storage	Shipped at 4°C. Store at -20 °C for one year. Avoid repeated freeze/thaw cycles.
Note	For research use only
Isotype	IgG
Clonality	Polyclonal
MW	15 kDa
Uniprot ID	Q15121
Expiration Date	12 months from date of receipt.



Immunohistochemical analysis of formalin...