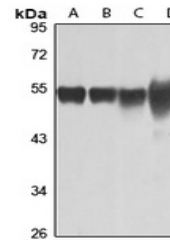


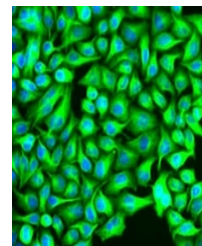
Product Datasheet

Tubulin beta-8 antibody (orb668538)

Description	Rabbit polyclonal antibody to Tubulin beta-8
Species/Host	Rabbit
Reactivity	Human
Conjugation	Unconjugated
Tested Applications	IF, WB
Immunogen	KLH-conjugated synthetic peptide of human Tubulin beta-8. The exact sequence is proprietary.
Target	TUBB8
Preservatives	Liquid in 0.42% Potassium phosphate, 0.87% Sodium chloride, pH 7.3, 30% glycerol, and 0.01% sodium azide.
Form/Appearance	Liquid in 0.42% Potassium phosphate, 0.87% Sodium chloride, pH 7.3, 30% glycerol, and 0.01% sodium azide.
Storage	Maintain refrigerated at 2-8°C for up to 2 weeks. For long term storage store at -20°C in small aliquots to prevent freeze-thaw cycles.
Note	For research use only
Clonality	Polyclonal
Source	Rabbit
Uniprot ID	Q3ZCM7
Entrez	347688
Dilution Range	WB: 1-500-2000, IHC-P: 1-50-200, IF: 1-50-200
Expiration Date	12 months from date of receipt.



Western blot analysis of Tubulin beta-8 ...



Immunofluorescent analysis of Tubulin be...