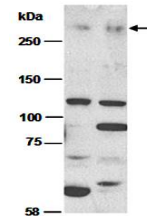


Product Datasheet

MLL2 antibody (orb66850)

Description	Rabbit polyclonal to MLL2.MLL2 is a histone methyltransferase that methylates 'Lys-4' of histone H3 ...
Species/Host	Rabbit
Reactivity	Human, Mouse
Conjugation	Unconjugated
Tested Applications	WB
Immunogen	N-terminal region of human MLL2
Preservatives	0.01% NaN3
Storage	-20°C
Note	For research use only
Clonality	Polyclonal
Purity	Affinity purification
MW	593
Uniprot ID	O14686
Dilution Range	WB:1:1000-1:5000
Expiration Date	12 months from date of receipt.



Western blot analysis of total cell extr...