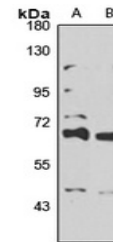


Product Datasheet

TRIM39 antibody (orb668498)

| | |
|----------------------------|---|
| Description | Rabbit polyclonal antibody to TRIM39 |
| Species/Host | Rabbit |
| Reactivity | Human |
| Conjugation | Unconjugated |
| Tested Applications | WB |
| Immunogen | KLH-conjugated synthetic peptide of human TRIM39. The exact sequence is proprietary. |
| Target | TRIM39 |
| Preservatives | Liquid in 0.42% Potassium phosphate, 0.87% Sodium chloride, pH 7.3, 30% glycerol, and 0.01% sodium azide. |
| Form/Appearance | Liquid in 0.42% Potassium phosphate, 0.87% Sodium chloride, pH 7.3, 30% glycerol, and 0.01% sodium azide. |
| Storage | Shipped at 4°C. Upon delivery aliquot and store at -20°C for one year. Avoid freeze/thaw cycles. |
| Note | For research use only |
| Clonality | Polyclonal |
| Source | Rabbit |
| Uniprot ID | Q9HCM9 |
| Entrez | 56658 |
| Dilution Range | WB: 1-500-2000 |
| Expiration Date | 12 months from date of receipt. |



Western blot analysis of TRIM39 expression...