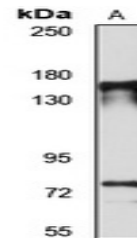


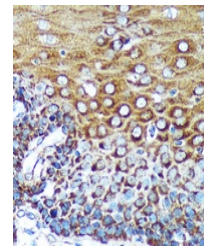
Product Datasheet

Cytospin-A antibody (orb668242)

Description	Rabbit polyclonal antibody to Cytospin-A
Species/Host	Rabbit
Reactivity	Human
Conjugation	Unconjugated
Tested Applications	IH, WB
Immunogen	Recombinant fusion protein of human Cytospin-A. The exact sequence is proprietary.
Target	SPECC1L
Preservatives	Liquid in 0.42% Potassium phosphate, 0.87% Sodium chloride, pH 7.3, 30% glycerol, and 0.01% sodium azide.
Form/Appearance	Liquid in 0.42% Potassium phosphate, 0.87% Sodium chloride, pH 7.3, 30% glycerol, and 0.01% sodium azide.
Storage	Maintain refrigerated at 2-8°C for up to 2 weeks. For long term storage store at -20°C in small aliquots to prevent freeze-thaw cycles.
Note	For research use only
Clonality	Polyclonal
Source	Rabbit
Uniprot ID	Q69YQ0
Entrez	23384
Dilution Range	WB: 1-500-2000
Expiration Date	12 months from date of receipt.



Western blot analysis of Cytospin-A expr...



Immunohistochemical analysis of Cytospin...