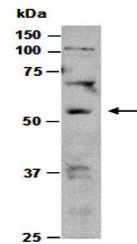


Product Datasheet

STEAP3 antibody (orb66804)

Description	Rabbit polyclonal to STEAP3. STEAP family member 3 (STEAP3) is an endosomal ferrireductase required f...
Species/Host	Rabbit
Reactivity	Human, Mouse
Conjugation	Unconjugated
Tested Applications	WB
Immunogen	N-terminal region of mouse STEAP3
Preservatives	0.01% NaN ₃
Storage	-20°C
Note	For research use only
Clonality	Polyclonal
Purity	Affinity purification
MW	55
Uniprot ID	Q8CI59
Dilution Range	WB:1:1000-1:5000
Expiration Date	12 months from date of receipt.



Western blot analysis of total cell extr...