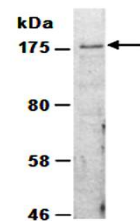


Product Datasheet

SETDB1 antibody (orb66802)

Description	Rabbit polyclonal to SETDB1.SET domain, bifurcated 1 (SETDB1) is a histone methyltransferase that sp...
Species/Host	Rabbit
Reactivity	Human
Conjugation	Unconjugated
Tested Applications	WB
Immunogen	N-terminal region of human SETDB1
Preservatives	0.01% NaN3
Storage	-20°C
Note	For research use only
Clonality	Polyclonal
Purity	Affinity purification
MW	143
Uniprot ID	Q15047
Dilution Range	WB:1:1000-1:5000
Expiration Date	12 months from date of receipt.



Western blot analysis of total cell extr...