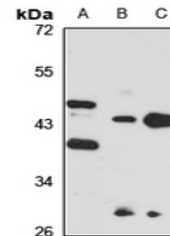


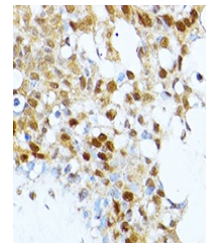
Product Datasheet

PRMT1 antibody (orb667804)

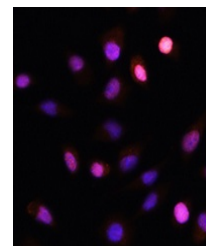
Description	Rabbit polyclonal antibody to PRMT1
Species/Host	Rabbit
Reactivity	Human, Mouse, Rat
Conjugation	Unconjugated
Tested Applications	IF, IH, WB
Immunogen	Recombinant fusion protein of human PRMT1. The exact sequence is proprietary.
Target	PRMT1
Preservatives	Liquid in 0.42% Potassium phosphate, 0.87% Sodium chloride, pH 7.3, 30% glycerol, and 0.01% sodium azide.
Form/Appearance	Liquid in 0.42% Potassium phosphate, 0.87% Sodium chloride, pH 7.3, 30% glycerol, and 0.01% sodium azide.
Storage	Maintain refrigerated at 2-8°C for up to 2 weeks. For long term storage store at -20°C in small aliquots to prevent freeze-thaw cycles.
Note	For research use only
Clonality	Polyclonal
Source	Rabbit
Uniprot ID	Q99873 , Q9JIF0 , Q63009
Entrez	15469 , 3276 , 60421
Dilution Range	WB: 1-500-2000, IHC-P: 1-50-200
Expiration Date	12 months from date of receipt.



Western blot analysis of PRMT1 expressio...



Immunohistochemical analysis of PRMT1 st...



Immunofluorescent analysis of PRMT1 stai...