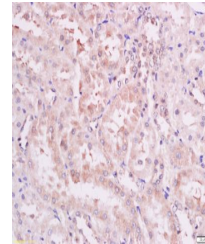


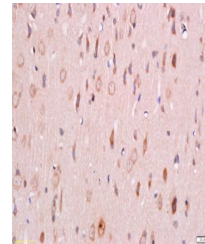
Product Datasheet

PDK1 (phospho-Ser241) antibody (orb6678)

Description	PDK1 (phospho-Ser241) antibody
Species/Host	Rabbit
Reactivity	Rat
Conjugation	Unconjugated
Tested Applications	ICC, IHC-P
Immunogen	KLH conjugated synthesised phosphopeptide derived from human PDPK1 around the phosphorylation site of Ser241 (AN(p-S)FV)
Target	Phospho-PDK1 (Ser241)
Preservatives	0.01M TBS(pH7.4) with 1% rAlbumin, 0.03% Proclin300 and 50% Glycerol.
Form/Appearance	Liquid
Concentration	1mg/ml
Storage	Shipped at 4°C. Store at -20 °C for one year. Avoid repeated freeze/thaw cycles.
Note	For research use only
Isotype	IgG
Clonality	Polyclonal
MW	61 kDa
Uniprot ID	O15530
Dilution Range	IHC-P=1:100-500, WB=1:500-2000, IHC-F=1:100-500, IF=1:100-500, ELISA=1:5000-10000
Expiration Date	12 months from date of receipt.



Immunohistochemical staining of rat kidn...



Immunohistochemical staining of rat brai...