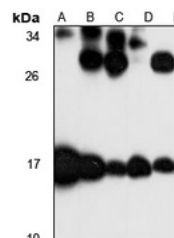


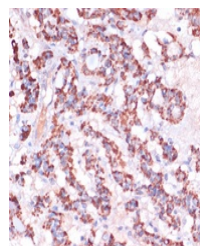
Product Datasheet

MRPL23 antibody (orb667321)

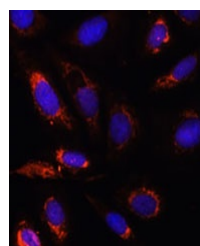
Description	Rabbit polyclonal antibody to MRPL23
Species/Host	Rabbit
Reactivity	Human, Mouse, Rat
Conjugation	Unconjugated
Tested Applications	IF, IH, WB
Immunogen	Recombinant fusion protein of human MRPL23. The exact sequence is proprietary.
Target	MRPL23
Preservatives	Liquid in 0.42% Potassium phosphate, 0.87% Sodium chloride, pH 7.3, 30% glycerol, and 0.01% sodium azide.
Form/Appearance	Liquid in 0.42% Potassium phosphate, 0.87% Sodium chloride, pH 7.3, 30% glycerol, and 0.01% sodium azide.
Storage	Maintain refrigerated at 2-8°C for up to 2 weeks. For long term storage store at -20°C in small aliquots to prevent freeze-thaw cycles.
Note	For research use only
Clonality	Polyclonal
Source	Rabbit
Uniprot ID	Q16540 , Q63750 , O35972
Entrez	64360 , 6150 , 19935
Dilution Range	WB: 1-500-2000
Expiration Date	12 months from date of receipt.



Western blot analysis of MRPL23 expressi...



Immunohistochemical analysis of MRPL23 S...



Immunofluorescent analysis of MRPL23 sta...