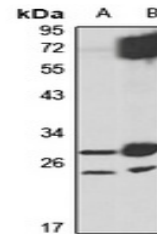


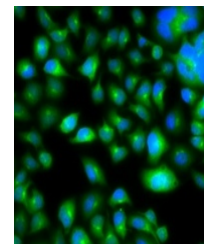
Product Datasheet

METTL7B antibody (orb667271)

Description	Rabbit polyclonal antibody to METTL7B
Species/Host	Rabbit
Reactivity	Human, Mouse, Rat
Conjugation	Unconjugated
Tested Applications	IF, WB
Immunogen	Recombinant fusion protein of human METTL7B. The exact sequence is proprietary.
Target	METTL7B
Preservatives	Liquid in 0.42% Potassium phosphate, 0.87% Sodium chloride, pH 7.3, 30% glycerol, and 0.01% sodium azide.
Form/Appearance	Liquid in 0.42% Potassium phosphate, 0.87% Sodium chloride, pH 7.3, 30% glycerol, and 0.01% sodium azide.
Storage	Maintain refrigerated at 2-8°C for up to 2 weeks. For long term storage store at -20°C in small aliquots to prevent freeze-thaw cycles.
Note	For research use only
Clonality	Polyclonal
Source	Rabbit
Uniprot ID	Q562C4 , Q9DD20 , Q6UX53
Entrez	366792 , 196410 , 71664
Dilution Range	WB: 1-500-2000, IHC-P: 1-50-200, IF: 1-50-200
Expiration Date	12 months from date of receipt.



Western blot analysis of METTL7B express...



Immunofluorescent analysis of METTL7B st...