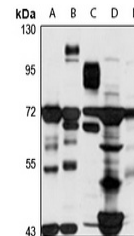


Product Datasheet

MAPKAP1 antibody (orb667235)

| | |
|----------------------------|-----------------------------------------------------------------------------------------------------------------------------------------|
| Description | Rabbit polyclonal antibody to MAPKAP1 |
| Species/Host | Rabbit |
| Reactivity | Human, Mouse, Rat |
| Conjugation | Unconjugated |
| Tested Applications | WB |
| Immunogen | Recombinant fusion protein of human MAPKAP1. The exact sequence is proprietary. |
| Target | MAPKAP1 |
| Preservatives | Liquid in 0.42% Potassium phosphate, 0.87% Sodium chloride, pH 7.3, 30% glycerol, and 0.01% sodium azide. |
| Form/Appearance | Liquid in 0.42% Potassium phosphate, 0.87% Sodium chloride, pH 7.3, 30% glycerol, and 0.01% sodium azide. |
| Storage | Maintain refrigerated at 2-8°C for up to 2 weeks. For long term storage store at -20°C in small aliquots to prevent freeze-thaw cycles. |
| Note | For research use only |
| Clonality | Polyclonal |
| Source | Rabbit |
| Uniprot ID | Q9BPZ7 , Q6AYF1 , Q8BKH7 |
| Entrez | 296648 , 79109 , 227743 |
| Dilution Range | WB: 1-500-2000 |
| Expiration Date | 12 months from date of receipt. |



Western blot analysis of MAPKAP1 express...