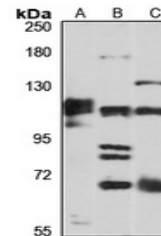


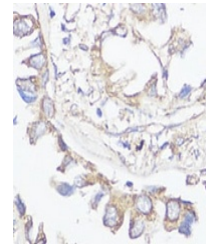
Product Datasheet

Klotho antibody (orb667095)

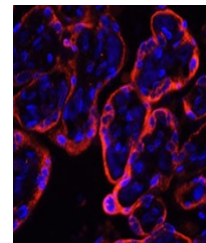
| | |
|----------------------------|---|
| Description | Rabbit polyclonal antibody to Klotho |
| Species/Host | Rabbit |
| Reactivity | Human, Mouse, Rat |
| Conjugation | Unconjugated |
| Tested Applications | IF, IH, WB |
| Immunogen | Recombinant fusion protein of human Klotho. The exact sequence is proprietary. |
| Target | KL |
| Preservatives | Liquid in 0.42% Potassium phosphate, 0.87% Sodium chloride, pH 7.3, 30% glycerol, and 0.01% sodium azide. |
| Form/Appearance | Liquid in 0.42% Potassium phosphate, 0.87% Sodium chloride, pH 7.3, 30% glycerol, and 0.01% sodium azide. |
| Storage | Maintain refrigerated at 2-8°C for up to 2 weeks. For long term storage store at -20°C in small aliquots to prevent freeze-thaw cycles. |
| Note | For research use only |
| Clonality | Polyclonal |
| Source | Rabbit |
| Uniprot ID | Q9UEF7 , Q9Z2Y9 , O35082 |
| Entrez | 83504 , 16591 , 9365 |
| Dilution Range | WB: 1-500-2000, IHC-P: 1-50-200, IF: 1-50-200 |
| Expiration Date | 12 months from date of receipt. |



Western blot analysis of Klotho expressi...



Immunohistochemical analysis of Klotho s...



Immunofluorescent analysis of Klotho sta...