

Product Datasheet

SERPINB5 (vPair™) Antibodies (orb66700)

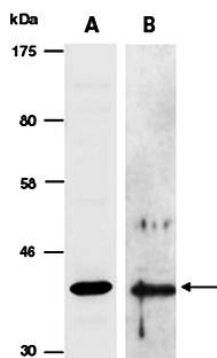
Description	Rabbit polyclonal to SERPINB5. 50 µg; I SERLINB5 (N3) & 50 µg; I SERPINB5 (N-term1). vPair antibodies represent a pair of fully characterized antibodies that recognize two different regions of a target protein. The product is developed by Biorbyt to address whether the signal observed truly represents the protein of interest, an often encountered issue in antibody-based assays. The use of a pair of fully characterized vPair antibodies in the same assay can validate signal specificity since vPair antibodies recognize two independent epitopes of the same protein. Different sets of vPair antibodies are developed at Biorbyt to work with specific applications, including antibody arrays, Western blot, IP-Western, ChIP, IHC, and FACS.
Species/Host	Rabbit
Reactivity	Human
Conjugation	Unconjugated
Tested Applications	WB
Immunogen	-
Preservatives	0.01% NaN ₃
Storage	-20°C
Note	For research use only
Clonality	Polyclonal
Purity	Affinity purification
MW	42
Uniprot ID	P36952
Expiration Date	12 months from date of receipt.

Biorbyt Ltd.

7 Signet Court, Swann's Road,
Cambridge, CB5 8LA, United Kingdom
Email: info@biorbyt.com, support@biorbyt.com
Phone: [+44 \(0\) 1223 859-353](tel:+44(0)1223859353) | Fax: [+1 \(415\) 651-8558](tel:+1(415)6518558)

Biorbyt LLC.

68 TW Alexander Drive,
Durham, NC, 27713, United States
Email: info@biorbyt.com, support@biorbyt.com
Phone: [+1 \(415\) 906-5211](tel:+1(415)9065211) | Fax: [+1 \(415\) 651-8558](tel:+1(415)6518558)



Western blot analysis of total cell extracts from human HeLa cells using SERPINB5 antibody

Biorbyt Ltd.

7 Signet Court, Swann's Road,
Cambridge, CB5 8LA, United Kingdom
Email: info@biorbyt.com, support@biorbyt.com
Phone: [+44 \(0\) 1223 859-353](tel:+44(0)1223859353) | Fax: [+1 \(415\) 651-8558](tel:+1(415)6518558)

Biorbyt LLC.

68 TW Alexander Drive,
Durham, NC, 27713, United States
Email: info@biorbyt.com, support@biorbyt.com
Phone: [+1 \(415\) 906-5211](tel:+1(415)9065211) | Fax: [+1 \(415\) 651-8558](tel:+1(415)6518558)