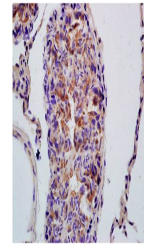


Product Datasheet

PDHA1 (phospho-Ser293) antibody (orb6670)

Description	PDHA1 (phospho-Ser293) antibody
Species/Host	Rabbit
Reactivity	Mouse, Rat
Conjugation	Unconjugated
Tested Applications	WB
Immunogen	KLH conjugated Synthesised phosphopeptide derived from human PDHA1 around the phosphorylation site of Ser293 (GH(p-S)MS)
Target	phospho-PDHA1 (Ser293)
Preservatives	0.01M TBS(pH7.4) with 1% rAlbumin, 0.03% Proclin300 and 50% Glycerol.
Form/Appearance	Liquid
Concentration	1mg/ml
Storage	Shipped at 4°C. Store at -20 °C for one year. Avoid repeated freeze/thaw cycles.
Note	For research use only
Isotype	IgG
Clonality	Polyclonal
MW	40 kDa
Uniprot ID	P08559
Dilution Range	WB=1:500-2000
Expiration Date	12 months from date of receipt.



Paraffin-embedded rat testis tissue with...