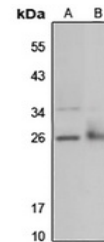


Product Datasheet

IDI1 antibody (orb666963)

Description	Rabbit polyclonal antibody to IDI1
Species/Host	Rabbit
Reactivity	Human, Mouse
Conjugation	Unconjugated
Tested Applications	WB
Immunogen	Recombinant fusion protein of human IDI1. The exact sequence is proprietary.
Target	IDI1
Preservatives	Liquid in 0.42% Potassium phosphate, 0.87% Sodium chloride, pH 7.3, 30% glycerol, and 0.01% sodium azide.
Form/Appearance	Liquid in 0.42% Potassium phosphate, 0.87% Sodium chloride, pH 7.3, 30% glycerol, and 0.01% sodium azide.
Storage	Maintain refrigerated at 2-8°C for up to 2 weeks. For long term storage store at -20°C in small aliquots to prevent freeze-thaw cycles.
Note	For research use only
Clonality	Polyclonal
Source	Rabbit
Uniprot ID	Q13907 , P58044
Entrez	319554 , 102635781 , 3422
Dilution Range	WB: 1-500-2000
Expiration Date	12 months from date of receipt.



Western blot analysis of IDI1 expression...