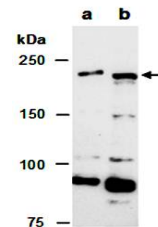


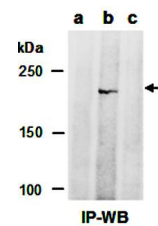
Product Datasheet

TET1 antibody (orb66692)

Description	Mouse monoclonal to TET1. TET1 is a methylcytosine dioxygenase that catalyzes the conversion of the m...
Species/Host	Mouse
Reactivity	Human, Mouse
Conjugation	Unconjugated
Tested Applications	WB
Immunogen	multiple regions of human TET1
Preservatives	0.01% NaN ₃
Storage	-20°C
Note	For research use only
Clonality	Monoclonal
Purity	Ascites
MW	235
Uniprot ID	Q8NFU7
Dilution Range	WB:1:1000-1:3000
Expiration Date	12 months from date of receipt.



Western blot analysis of total cell extr...



Western blot analysis of total cell extr...