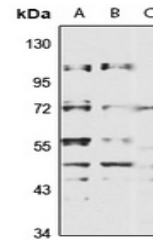


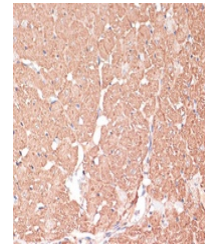
Product Datasheet

FRMD6 antibody (orb666717)

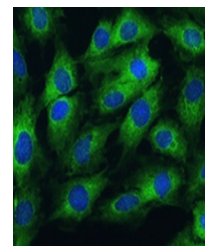
Description	Rabbit polyclonal antibody to FRMD6
Species/Host	Rabbit
Reactivity	Human, Mouse, Rat
Conjugation	Unconjugated
Tested Applications	IF, IH, WB
Immunogen	Recombinant fusion protein of human FRMD6. The exact sequence is proprietary.
Target	FRMD6
Preservatives	Liquid in 0.42% Potassium phosphate, 0.87% Sodium chloride, pH 7.3, 30% glycerol, and 0.01% sodium azide.
Form/Appearance	Liquid in 0.42% Potassium phosphate, 0.87% Sodium chloride, pH 7.3, 30% glycerol, and 0.01% sodium azide.
Storage	Maintain refrigerated at 2-8°C for up to 2 weeks. For long term storage store at -20°C in small aliquots to prevent freeze-thaw cycles.
Note	For research use only
Clonality	Polyclonal
Source	Rabbit
Uniprot ID	Q96NE9 , Q8VII0 , Q8COV9
Entrez	122786 , 319710
Dilution Range	WB: 1-500-2000
Expiration Date	12 months from date of receipt.



Western blot analysis of FRMD6 expressio...



Immunohistochemical analysis of FRMD6 st...



Immunofluorescent analysis of FRMD6 stai...