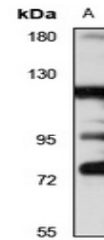


Product Datasheet

FGD1 antibody (orb666679)

Description	Rabbit polyclonal antibody to FGD1
Species/Host	Rabbit
Reactivity	Mouse, Rat
Conjugation	Unconjugated
Tested Applications	WB
Immunogen	KLH-conjugated synthetic peptide of human FGD1. The exact sequence is proprietary.
Target	FGD1
Preservatives	Liquid in 0.42% Potassium phosphate, 0.87% Sodium chloride, pH 7.3, 30% glycerol, and 0.01% sodium azide.
Form/Appearance	Liquid in 0.42% Potassium phosphate, 0.87% Sodium chloride, pH 7.3, 30% glycerol, and 0.01% sodium azide.
Storage	Maintain refrigerated at 2-8°C for up to 2 weeks. For long term storage store at -20°C in small aliquots to prevent freeze-thaw cycles.
Note	For research use only
Clonality	Polyclonal
Source	Rabbit
Uniprot ID	P52734 , P98174
Entrez	2245 , 14163
Dilution Range	WB: 1-500-2000, IHC-P: 1-50-200, IF: 1-50-200
Expiration Date	12 months from date of receipt.



Western blot analysis of FGD1 expression...