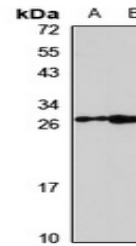


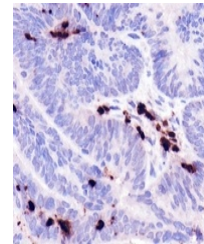
Product Datasheet

Neutrophil Elastase antibody (orb666573)

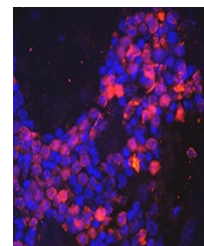
Description	Rabbit polyclonal antibody to Neutrophil Elastase
Species/Host	Rabbit
Reactivity	Human, Mouse, Rat
Conjugation	Unconjugated
Tested Applications	IF, IH, WB
Immunogen	Recombinant fusion protein of human Neutrophil Elastase. The exact sequence is proprietary.
Target	ELANE
Preservatives	Liquid in 0.42% Potassium phosphate, 0.87% Sodium chloride, pH 7.3, 30% glycerol, and 0.01% sodium azide.
Form/Appearance	Liquid in 0.42% Potassium phosphate, 0.87% Sodium chloride, pH 7.3, 30% glycerol, and 0.01% sodium azide.
Storage	Maintain refrigerated at 2-8°C for up to 2 weeks. For long term storage store at -20°C in small aliquots to prevent freeze-thaw cycles.
Note	For research use only
Clonality	Polyclonal
Source	Rabbit
Uniprot ID	P08246, Q3UP87
Entrez	1991, 50701
Dilution Range	WB: 1-500-2000
Expiration Date	12 months from date of receipt.



Western blot analysis of Neutrophil Elastase antibody.



Immunohistochemical analysis of Neutrophil Elastase antibody.



Immunofluorescent analysis of Neutrophil Elastase antibody.