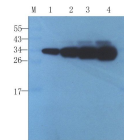


## Product Datasheet

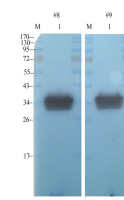
### mCherry antibody (orb66657)

<b>Description</b>	mCherry antibody
<b>Species/Host</b>	Mouse
<b>Conjugation</b>	Unconjugated
<b>Tested Applications</b>	ELISA, IHC-P, WB
<b>Immunogen</b>	Human mCherry recombinant protein (orb178365) was used as immunogen.
<b>Target</b>	mCherry
<b>Form/Appearance</b>	10 mM PBS, 0.02% sodium azide
<b>Concentration</b>	- 100 µg (in 200 µl): 0.5 mg/ml- 200 µg (in 400 µl): 0.5 mg/ml
<b>Storage</b>	At -20°C for one year. After reconstitution at 4°C for two weeks. It can also be aliquotted and stored frozen at -20°C for a longer time.
<b>Note</b>	For research use only
<b>Isotype</b>	Mouse IgG1
<b>Clonality</b>	Monoclonal
<b>Purity</b>	Monoclonal antibodies are purified by peptide affinity chromatography
<b>MW</b>	34 kDa
<b>Dilution Range</b>	WB: 1 µg/ml
<b>Expiration Date</b>	12 months from date of receipt.



Lane 1: mCherry protein 20ng  
Lane 2: mCherry protein 50ng  
Lane 3: mCherry protein 100ng  
Lane 4: mCherry protein 200ng

WB analysis of protein 20 ng (lane 1), p...



lane 1: recombinant mCherry protein

Western blot analysis of mcherry protein...