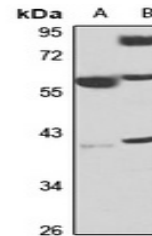


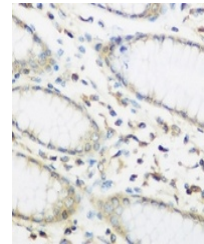
Product Datasheet

EIF2B antibody (orb666566)

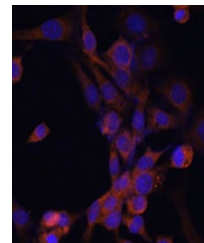
Description	Rabbit polyclonal antibody to EIF2B
Species/Host	Rabbit
Reactivity	Human, Mouse, Rat
Conjugation	Unconjugated
Tested Applications	IF, IH, IP, WB
Immunogen	Recombinant fusion protein of human EIF2B. The exact sequence is proprietary.
Target	EIF2B2
Preservatives	Liquid in 0.42% Potassium phosphate, 0.87% Sodium chloride, pH 7.3, 30% glycerol, and 0.01% sodium azide.
Form/Appearance	Liquid in 0.42% Potassium phosphate, 0.87% Sodium chloride, pH 7.3, 30% glycerol, and 0.01% sodium azide.
Storage	Maintain refrigerated at 2-8°C for up to 2 weeks. For long term storage store at -20°C in small aliquots to prevent freeze-thaw cycles.
Note	For research use only
Clonality	Polyclonal
Source	Rabbit
Uniprot ID	Q62818 , P49770 , Q99LD9
Entrez	217715 , 8892
Dilution Range	WB: 1-500-2000, IHC-P: 1-50-200, IP: 1-20-100
Expiration Date	12 months from date of receipt.



Western blot analysis of EIF2B expressio...



Immunohistochemical analysis of EIF2B st...



Immunofluorescent analysis of EIF2B stai...