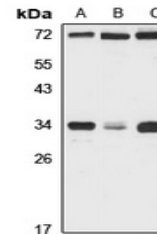


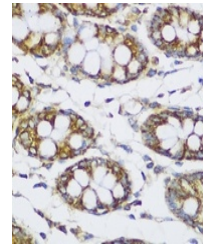
Product Datasheet

ECH1 antibody (orb666545)

Description	Rabbit polyclonal antibody to ECH1
Species/Host	Rabbit
Reactivity	Human, Mouse, Rat
Conjugation	Unconjugated
Tested Applications	IH, WB
Immunogen	Recombinant fusion protein of human ECH1. The exact sequence is proprietary.
Target	ECH1
Preservatives	Liquid in 0.42% Potassium phosphate, 0.87% Sodium chloride, pH 7.3, 30% glycerol, and 0.01% sodium azide.
Form/Appearance	Liquid in 0.42% Potassium phosphate, 0.87% Sodium chloride, pH 7.3, 30% glycerol, and 0.01% sodium azide.
Storage	Maintain refrigerated at 2-8°C for up to 2 weeks. For long term storage store at -20°C in small aliquots to prevent freeze-thaw cycles.
Note	For research use only
Clonality	Polyclonal
Source	Rabbit
Uniprot ID	Q62651 , Q13011 , O35459
Entrez	64526 , 1891 , 51798
Dilution Range	WB: 1-500-2000, IHC-P: 1-50-200
Expiration Date	12 months from date of receipt.



Western blot analysis of ECH1 expression...



Immunohistochemical analysis of ECH1 sta...