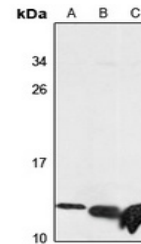


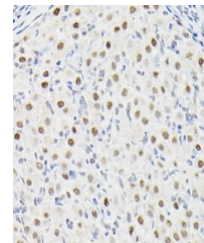
Product Datasheet

DYNLL1 antibody (orb666533)

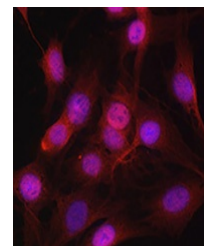
Description	Rabbit polyclonal antibody to DYNLL1
Species/Host	Rabbit
Reactivity	Human, Mouse, Rat
Conjugation	Unconjugated
Tested Applications	IF, IH, WB
Immunogen	KLH-conjugated synthetic peptide of human DYNLL1. The exact sequence is proprietary.
Target	DYNLL1
Preservatives	Liquid in 0.42% Potassium phosphate, 0.87% Sodium chloride, pH 7.3, 30% glycerol, and 0.01% sodium azide.
Form/Appearance	Liquid in 0.42% Potassium phosphate, 0.87% Sodium chloride, pH 7.3, 30% glycerol, and 0.01% sodium azide.
Storage	Shipped at 4°C. Upon delivery aliquot and store at -20°C for one year. Avoid freeze/thaw cycles.
Note	For research use only
Clonality	Polyclonal
Source	Rabbit
Uniprot ID	P63170 , P63168 , P63167
Entrez	56455 , 58945 , 8655
Dilution Range	WB: 1-500-2000
Expiration Date	12 months from date of receipt.



Western blot analysis of DYNLL1 expressi...



Immunohistochemical analysis of DYNLL1 S...



Immunofluorescent analysis of DYNLL1 sta...