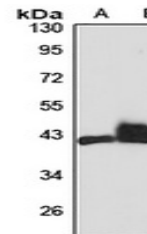


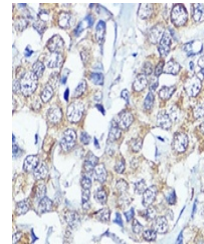
Product Datasheet

PCDHA6 antibody (orb666343)

Description	Rabbit polyclonal antibody to PCDHA6
Species/Host	Rabbit
Reactivity	Human, Mouse, Rat
Conjugation	Unconjugated
Tested Applications	IH, WB
Immunogen	KLH-conjugated synthetic peptide of human CB2. The exact sequence is proprietary.
Target	CNR2
Preservatives	Liquid in 0.42% Potassium phosphate, 0.87% Sodium chloride, pH 7.3, 30% glycerol, and 0.01% sodium azide.
Form/Appearance	Liquid in 0.42% Potassium phosphate, 0.87% Sodium chloride, pH 7.3, 30% glycerol, and 0.01% sodium azide.
Storage	Maintain refrigerated at 2-8°C for up to 2 weeks. For long term storage store at -20°C in small aliquots to prevent freeze-thaw cycles.
Note	For research use only
Clonality	Polyclonal
Source	Rabbit
Uniprot ID	P34972 , P47936 , Q9QZN9
Entrez	57302 , 12802 , 1269
Dilution Range	WB: 1-500-2000, IHC-P: 1-50-200
Expiration Date	12 months from date of receipt.



Western blot analysis of CB2 expression ...



Immunohistochemical analysis of CB2 stai...