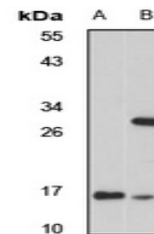


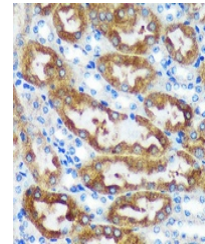
Product Datasheet

CHCHD2 antibody (orb666284)

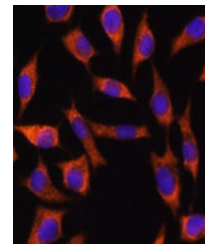
Description	Rabbit polyclonal antibody to CHCHD2
Species/Host	Rabbit
Reactivity	Human, Mouse
Conjugation	Unconjugated
Tested Applications	IF, IH, WB
Immunogen	Recombinant fusion protein of human CHCHD2. The exact sequence is proprietary.
Target	CHCHD2
Preservatives	Liquid in 0.42% Potassium phosphate, 0.87% Sodium chloride, pH 7.3, 30% glycerol, and 0.01% sodium azide.
Form/Appearance	Liquid in 0.42% Potassium phosphate, 0.87% Sodium chloride, pH 7.3, 30% glycerol, and 0.01% sodium azide.
Storage	Maintain refrigerated at 2-8°C for up to 2 weeks. For long term storage store at -20°C in small aliquots to prevent freeze-thaw cycles.
Note	For research use only
Clonality	Polyclonal
Source	Rabbit
Uniprot ID	Q9D1L0 , Q9Y6H1
Entrez	51142 , 14004
Dilution Range	WB: 1-500-2000
Expiration Date	12 months from date of receipt.



Western blot analysis of CHCHD2 expressi...



Immunohistochemical analysis of CHCHD2 S...



Immunofluorescent analysis of CHCHD2 sta...