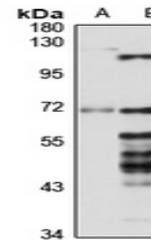


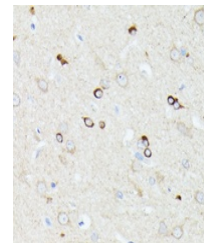
Product Datasheet

CCDC6 antibody (orb666207)

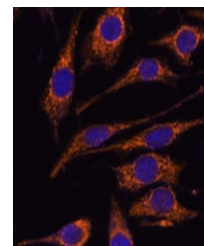
Description	Rabbit polyclonal antibody to CCDC6
Species/Host	Rabbit
Reactivity	Human, Mouse, Rat
Conjugation	Unconjugated
Tested Applications	IF, IH, WB
Immunogen	Recombinant fusion protein of human CCDC6. The exact sequence is proprietary.
Target	CCDC6
Preservatives	Liquid in 0.42% Potassium phosphate, 0.87% Sodium chloride, pH 7.3, 30% glycerol, and 0.01% sodium azide.
Form/Appearance	Liquid in 0.42% Potassium phosphate, 0.87% Sodium chloride, pH 7.3, 30% glycerol, and 0.01% sodium azide.
Storage	Shipped at 4°C. Upon delivery aliquot and store at -20°C for one year. Avoid freeze/thaw cycles.
Note	For research use only
Clonality	Polyclonal
Source	Rabbit
Uniprot ID	D3YZP9 , Q16204
Entrez	76551 , 8030
Dilution Range	WB: 1-500-2000
Expiration Date	12 months from date of receipt.



Western blot analysis of CCDC6 expressio...



Immunohistochemical analysis of CCDC6 st...



Immunofluorescent analysis of CCDC6 stai...